



Available Brochure

Vital safety devices needed to warn workers and pedestrians that a vehicle is manoeuvring. Our range includes **bbs-tek® white sound®** alarms; smart alarms which adjust to the ambient noise level; and speaking alarms, which provide a real speech warning of imminent danger.

### Which alarm is for you?

#### Heavy duty

For plant, quarry and construction machines or environments with high ambient noise.



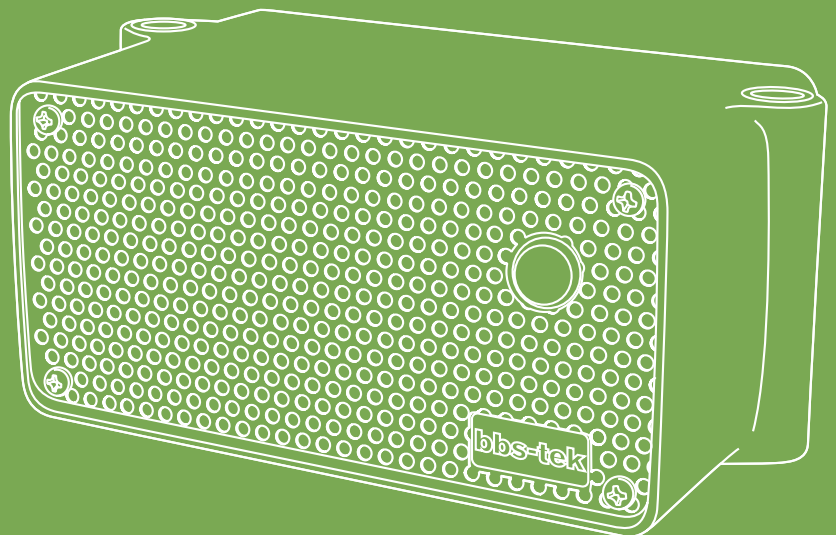
#### Medium duty

Ideal for commercial road going vehicles and environments with mid level ambient noise.



#### Vehicle specific

Petrol tanker (ADR) and electric forklift (High Voltage) options available.



# reversing and warning alarms

## bbs-tek® white sound®

The safest alarms in the world due to their instant locatability and directional sound. The multi-frequency alarms are only heard in the danger zone, thus eliminating noise nuisance for local residents.

### bbs-tek® smart reversing alarms

Continually adjust to 5-10 decibels above ambient so ideal in varying noise level environments.

### bbs-tek® reversing alarms



## Backchat®

Speaking warning alarms that reproduce real speech with unrivalled quality and clarity.

### Speaking alarms

Include standard messages for reversing, handbrake warning and attack alarms.

### Bespoke speaking alarms

Define your own message as required.

### Nightshift® speaking alarms

Include built-in alarm cut-out for night-time use.

### Vehicle intercom

Two-way communication system provides clear, reliable communication between the driver and others not in the cab.



**WHITE SOUND® SMART REVERSING ALARM****SA-BBS-107 - Self adjusting heavy duty - 87-107 Decibels****1400**

- 12-24 Volts
- IP68
- Size (WxHxD)  
172 x 79 x 95mm
- Lifetime warranty

**Features**

- Alarm continually adjusts to 5-10dB above ambient
- Multi frequency broadband sound
- Instantly locatable
- Sound confined to danger area
- Eliminates noise nuisance
- Sounder unit: Driver
- Hole centres (mm): 153

**Power**

- Current: Max 1 Amp

**Durability & standards**

- Mechanical vibration: 10G
- Operating temperature: -40 to +85°C
- CE marked
- SAE J994

**WHITE SOUND® SMART REVERSING ALARM****SA-BBS-97 - Self adjusting - medium duty - 77-97 Decibels****1399****SA-BBS-97HV - Self adjusting - electric forklift - 77-97 Decibels****1398**

- 12-24 Volts
- 36-80 Volts (HV)
- IP68
- Size (WxHxD)  
127 x 76 x 65mm
- Lifetime warranty

**Features**

- Alarm continually adjusts to 5-10dB above ambient
- Multi frequency white sound alarm
- Instantly locatable
- Sound confined to danger area
- Eliminates noise nuisance
- Sounder unit: Driver
- Hole centres (mm): 98-108

**Power**

- Current: Max 1 Amps

**Durability & standards**

- Mechanical vibration: 10G
- Operating temperature: -40 to +85°C
- CE marked
- SAE J994
- NAS/PIEK approved for night-time delivery

**WHITE SOUND® REVERSING ALARM****BBS-107 - Heavy duty - 107 Decibels****0899****BBS-102 - Heavy duty - 102 Decibels****0898**

- 12-24 Volts
- IP68
- Size (WxHxD)  
172 x 79 x 95mm
- Lifetime warranty

**Features**

- Multi frequency broadband sound
- Instantly locatable
- Sound confined to danger area
- Eliminates noise nuisance
- Sounder unit: Driver
- Hole centres (mm): 153

**Power**

- Current: Max 1 Amps

**Durability & standards**

- Mechanical vibration: 10G
- Operating temperature: -40 to +85°C
- CE marked
- EMC approved: e
- SAE J994

## WHITE SOUND® REVERSING ALARM



<b>BBS-97HV - Electric forklift - 97 Decibels</b>	<b>1403</b>
<b>BBS-92HV - Electric forklift - 92 Decibels</b>	<b>1402</b>
<b>BBS-92ADR - Petrol tanker - 92 Decibels</b>	<b>2165</b>

- 12-24 Volts
- 36-80 Volts (HV)

- IP68

- Size (WxHxD)  
127 x 76 x 65mm

- Lifetime warranty

### Features

- Multi frequency broadband sound
- Instantly locatable
- Sound confined to danger area
- Eliminates noise nuisance
- Sounder unit: Speaker
- Hole centres (mm): 98-108

### Power

- Current: Max 0.3 Amps

### Durability & standards

- Mechanical vibration: 10G
- Operating temperature: -40 to +85°C
- CE marked
- EMC approved: e
- SAE J994

## BEST SELLER

## WHITE SOUND® REVERSING ALARM



<b>BBS-97 - Medium duty - 97 Decibels</b>	<b>0935</b>
<b>BBS-92 - Medium duty - 92 Decibels</b>	<b>0934</b>
<b>BBS-87 - Medium duty - 87 Decibels</b>	<b>0897</b>
<b>BBS-82 - Medium duty - 82 Decibels</b>	<b>0896</b>
<b>BBS-77 - Medium duty - 77 Decibels</b>	<b>1397</b>

- 12-24 Volts

- IP68

- Size (WxHxD)  
105x65x37mm (BBS-97/92)  
105x65x32mm (BBS-87/82/77)

- Lifetime warranty

### Features

- Multi frequency broadband sound
- Instantly locatable
- Sound confined to danger area
- Eliminates noise nuisance
- Sounder unit: Speaker
- Hole centres (mm): 76

### Power

- Current: Max 0.5 Amps

### Durability & standards

- Mechanical vibration: 10G
- Operating temperature: -40 to +85°C
- CE marked
- EMC approved: e
- SAE J994
- NAS/PIEK approved for night-time delivery (BBS-82 & BBS-77 only)

## SPEAKING ALARM



**BC-01HP - Single reversing message - 110 Decibels**  
**BC-01HP(B) - Bespoke single message - 110 Decibels**

**0665**  
**1199**

- 12-24 Volts
- IP68
- Size (WxHxD)  
116 x 115 x 117.5mm
- 2 year warranty

### Features

- Real speech alarm
- \* BC-01HP message "Ssh! Stand well clear, vehicle reversing..."
- Bespoke message up to 8 seconds, under 4 seconds for best speech quality
- Sounder unit: Speaker
- Hole centres (mm): 102

### Power

- Current: 0.5 Amps

### Durability & standards

- CE marked
- EMC approved: e

## NIGHTSHIFT® SPEAKING ALARM



**BC-01(NS) - Single reversing message - Nightshift - 90 or 0 Decibels**  
**BC-01(NS-B) - Bespoke single message - Nightshift - 90 or 0 Decibels**

**0378**  
**1198**

- 12-24 Volts
- IP68
- Size (WxHxD)  
122 x 84 x 50mm
- 2 year warranty

### Features

- Real speech alarm
- \* BC-01(NS) message "Ssh! Stand well clear, vehicle reversing..."
- Bespoke message up to 8 seconds, under 4 seconds for best speech quality
- Double engage reverse to cut-out or reduce sound

- Sounder unit: Speaker
- Hole centres (mm): 102

### Power

- Current: 0.5 Amps

### Durability & standards

- CE marked
- EMC approved: e

## SPEAKING ALARM



**BC-01 - Single reversing message - 90 Decibels**  
**BC-01(B) - Bespoke single message - 90 Decibels**  
**BC-02(B) - Bespoke dual message - 90 Decibels**

**0077**  
**0079**  
**0083**

- 12-24 Volts
- IP68
- Size (WxHxD)  
122 x 84 x 50mm
- 2 year warranty

### Features

- Real speech alarm
- \* BC-01 message "Ssh! Stand well clear, vehicle reversing..."
- Bespoke message up to 8 seconds, under 4 seconds for best speech quality
- Sounder unit: Speaker
- Hole centres (mm): 102

### Power

- Current: 0.5 Amps

### Durability & standards

- CE marked
- EMC approved: e

## SPEAKING HANDBRAKE WARNING ALARM



2 wire version shown

**BC-01(H/Brake) - Single message - 2 wire - 90 Decibels**  
**BC-01(4W)(H/Brake) - Single message 4 wire - 90 Decibels**

**0849**  
**1715**

• 12-24 Volts

• IP68

• Size (WxHxD)  
 122 x 84 x 50mm

• 2 year warranty

### Features

- Real speech alarm
- \* Message "Bleep! Handbrake not applied..."
- Sounder unit: Speaker
- Hole centres (mm): 102

### Power

- Current: 0.5 Amps

### Durability & standards

- CE marked
- EMC approved: e

## SPEAKING SIDE TURN WARNING ALARM



**SS-BC-08 - Single side turn message - 90 Decibels**

**1334**

• 12-24 Volts

• IP68

• Size (WxHxD)  
 122 x 84 x 50mm

• 2 year warranty

### Features

- Real speech alarm
- \* Message "Ssh! Caution. Truck turning left..."
- Sounder unit: Speaker
- Hole centres (mm): 102

### Power

- Current: 0.5 Amps

### Durability & standards

- CE marked
- EMC approved: e

## SPEAKING ATTACK ALARM



**BC-AA(BUS) - Single bus specific message - 110 Decibels**  
**BC-AA(B) - Single bespoke message - 110 Decibels**

**0064**  
**1465**

• 12-24 Volts

• IP68

• Size (WxHxD)  
 116 x 115 x 117.5mm

• 2 year warranty

### Features

- Real speech alarm
- Activated by panic button, repeats continuously until deactivated by hidden switch
- Sounder unit: Speaker
- Hole centres (mm): 48

### Power

- Current: 0.5 Amps

### Durability & standards

- CE marked
- EMC approved: e

## VEHICLE INTERCOM



**BC-VI - Normally open channel rear to cab; button press cab to rear**  
**BC-VI-2 - Normally closed channel; button press communication**

**0815**  
**0875**

• 12-24 Volts

• IP68

• Size (WxHxD)  
 122 x 84 x 50mm

• 2 year warranty

### Features

- Two-way communication system
- Master unit volume control: 80-95dB
- Includes master unit, slave unit and 25m cable
- Sounder unit: Speaker
- Hole centres (mm): 102

### Power

- Current: 0.5 Amps

### Durability & standards

- CE marked

## ALARM ANCILLARIES



### TCO-47 - Auto-reset Backalarm cut-out (dash mount)

0663

- 12-24 Volts
- 2 year warranty

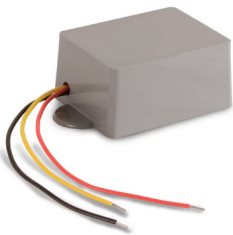
#### Features

- Single touch timed relay
- Allows driver to cut-out Backalarm if reversing between 11.30pm-7.00am
- Auto-resets after 3-4 mins delay

#### Durability and Standards

- CE marked
- EMC approved

## ALARM ANCILLARIES



### NS-2 - Nightshift Backalarm cut-out switch

0334

### NS-3 - Nightshift Backalarm cut-out switch (auto gear box)

0974

- 12-24 Volts
- IP68
- 2 year warranty

#### Features

- Double engage reverse to cut-out Backalarm
- Resets when reverse gear disengaged (longer time delay for NS-3)
- No wiring necessary to cab

#### Durability and Standards

- CE marked
- EMC approved

## ALARM ANCILLARIES



### SW-16 - Pigtail microswitch - electro-mechanical

0153

- 2 year warranty

#### Features

- Fits adjacent to gearshift lever / linkage so that pigtail tip is moved 1 inch